

cultural affairs
PINELLAS COUNTY

12520 Ulmerton Road
Largo, Florida 33774-2692
T 727.582.2500 | F 727.582.2550

www.pinellasarts.org

Painting on cover (detail) by Pamela Miles

St. Petersburg to Clearwater to Tarpon Springs

Cultural Map



The Cultural Affairs Department is supported by the Pinellas Board of County Commissioners, the School Board of Pinellas County, Florida Department of State/Division of Cultural Affairs, Florida Arts Council, National Endowment for the Arts, and the Cultural Council.
30M—510



cultural affairs
PINELLAS COUNTY

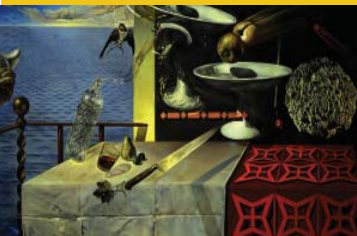
From the pink streets of Pinellas Point in the south, to the sponge docks of Tarpon Springs in the north, visitors and residents alike can experience the variety of Pinellas County's cultural riches. Whether one is looking for fine arts, music, dance, theater, museums or science and wildlife experiences, Pinellas has it all.

Presented here are the locations and descriptions of many of the major cultural offerings. In addition, Pinellas has an interesting variety of commercial galleries and attractions, and outstanding municipal, county and state parks.

For more information and specific events at museums, botanical gardens, gallery walks, and performance venues, visit individual websites or visit:

- www.pinellasarts.org
- www.myclearwater.com
- www.VisitStPeteClearwater.com
- www.stpete.org

ALWAYS CALL BEFORE YOU GO



PRESENTING ARTS GROUPS

EMIT
620 31st Street N
St. Petersburg, FL 33713
www.emits.org
727.341.4383
EMIT presents concerts & workshops of adventurous music (electronic, world jazz & new classical).

THE FLORIDA ORCHESTRA
244 2nd Avenue N, Suite 421
St. Petersburg, FL 33701
www.floridiorchestra.org
813.286.1170 (Pinellas)
727.892.3331 (Tampa)
Ticket Center 813.286.2403
or 1.800.662.7286
The Florida Orchestra performs a wide variety of music in multiple concerts for the Tampa Bay area.

THE MASTER CHORALE OF TAMPA BAY
30382 USF Holly Drive
Tampa, FL 33620-3038
www.masterchorale.com
813.874.7126
The Master Chorale is a 170 voice symphonic chorus composed of the finest singers in the Tampa Bay area and performs regularly with The Florida Orchestra.

SUNSTATE OPERA SOCIETY, INC.
7205 64 Way N
Pinellas Park, FL 33781
www.sunstateopera.org
727.547.0396
Sunstate Opera Society, Inc. is comprised of Tampa Bay talent dedicated to providing top quality opera, with performances at local venues.

TAMPA BAY SYMPHONY
P.O. BOX 4653
Clearwater, FL 33758-4653
www.tampabay.com
727.442.3696
Tampa Bay Symphony, comprised of volunteer musicians, performs concerts annually in Tampa, St. Petersburg and Clearwater.

FESTIVALS / SPECIAL EVENTS

TARPON SPRINGS ARTS & CRAFTS FESTIVAL
Craig Park, Tarpon Springs
Tarpon Springs Chamber of Commerce
11 E. Orange Street
Tarpon Springs, FL 34689
www.tarponssprings.com
727.837.6100
This annual April arts & crafts festival, held on the bayou at Craig Park, has at least 200 exhibitors. Music and food are important components of the show.

DECEMBER FINE ARTS & CRAFTS FESTIVAL
Palm Harbor Chamber of Commerce Show Location:
Downtown Palm Harbor on Florida Ave., Palm Harbor, FL 34683
www.palmharbor.org
727.784.4287
This annual December event features juried arts & crafts, music, food and more.

ART HARVEST
1265 Bayshore Blvd.
Dunedin, FL 34698
www.jhd.org
727.326.5523
Art Harvest, an annual juried, fine arts & fine crafts show, is held outdoors in November at Highlander Park in Dunedin.

SUNSETS AT PIER 60
Pier 60, Clearwater Beach
P.O. Box 3055
Clearwater Beach, FL 33767
www.sunsetsatpier60.com
727.434.6960
There are crafts, vendors, street performers and live music in a daily sunset festival, open year-round 2 hours before, until 2 hours after sunset, weather permitting.

CLEARWATER JAZZ HOLIDAY
P.O. Box 7278
Clearwater, FL 33758-7278
www.clearwaterjazz.com
727.461.5290
Clearwater Jazz Holiday is an annual October, international, jazz weekend musical event.

FUN 'N' SUN FESTIVAL
Downtown Clearwater & Clearwater Beach City of Clearwater Parks & Rec. Dept.
P.O. Box 4748
Clearwater, FL 33758-4748
www.myclearwater.com
727.582.4800
Held in mid-April through early May, there is a festival and parade, arts & crafts, entertainment and good food.

FLORIDA AFRICAN-AMERICAN HERITAGE CELEBRATION
P.O. Box 5785
Clearwater, FL 33758
www.floridacraftsmen.net
727.532.1698
This annual festival, held in February at Heritage Village, features artists and musical performances.

HERITAGE VILLAGE COUNTRY JUBILEE
11900 125th Street N
Largo, FL 33774
www.pinellascounty.org/heritage
727.542-2323
The annual October Country Jubilee, features crafts, music, performances and food. Free.

ST. PETE PRIDE
P.O. Box 12677
St. Petersburg, FL 33733
Office:
3150 5th Avenue N
St. Petersburg, FL 33713
727.888.9435
Promotes education through multiple events including an annual street festival, promenade and juried art show.

CRAFT ART FESTIVAL
501 Central Avenue
St. Petersburg, FL 33701
www.floridacraftsmen.net
727.832.1781
Taking place in November on Central Avenue & 5th Street in St. Petersburg, this outdoor show features the finest in contemporary crafts.

SPIFFS
350 5th Street N
St. Petersburg, FL 33701-2812
www.spiffs.org
727.552.1896
St. Petersburg International Folk Fair Society (SPIFFS) has an annual March Folk Fair.

FOLKFEST ST. PETE
Creative City, Inc.
1124 Central Avenue
St. Petersburg, FL 33705
www.creativecity.org
727.825.0515
An outdoor festival of art and music featuring the best of contemporary Folk Art.

FESTIVAL OF STATES
P.O. Box 3732
St. Petersburg, FL 33731
www.festivalofstates.com
727.821.9888
St. Petersburg Festival of States is an annual celebration for all ages and includes art, music, parades, sports, food and more, over a period of several days in the spring.

MAINSAIL ARTS FESTIVAL
Shank Park, St. Petersburg
P.O. Box 2842
St. Petersburg, FL 33731-5668
www.mainsailartsfestival.org
727.892.5855
Mainsail in April is considered one of the top arts & crafts shows in the country. There are musical performances, kids' art activities and food.

JUNETEENTH FAMILY FESTIVAL
Campbell Park, St. Petersburg
601 14th Street S
St. Petersburg, FL 33705
727.824.0810
This annual free festival celebrates African American freedom declared on June 19th as Freedom Day. There is live entertainment, historical and social speakers, food vendors, musical screening and social service exhibitors on the third Saturday in June.

TAMPA BAY BLUES FESTIVAL
Vinyo Park, St. Petersburg
Festival of States
P.O. Box 3731
St. Petersburg, FL 33731
www.festivalofstates.com
727.821.9888
Tampa Bay Blues Festival which is part of Festival of States activities, held in early April, has some of the best blues entertainers and bands in the country.

FIRST NIGHT ST. PETERSBURG
P.O. Box 1915
St. Petersburg, FL 33731-1915
www.firstnightstpete.com
727.823.8906
First Night St. Petersburg is celebrated on New Year's Eve in downtown St. Petersburg and offers diverse cultural entertainment in a non-alcoholic environment.

COOL ART SHOW-PROFESSIONAL ASSOCIATION OF VISUAL ARTISTS
P.O. Box 2665
Dunedin, FL 34697-2665
www.pava-artists.org
727.736.8976
An indoor visual arts exhibition and sale of the works of the area's best artists held in July in St. Petersburg.

ARTS EVENINGS

GULFPORT ART WALK
Beach Blvd. (south of 28th Ave.)
Gulfport Art Village
5008 Shore Blvd. S
Gulfport, FL 33707
www.gulfportfl.us
727.883.1070
These art walks include galleries, shops, free rides, music, performances and occasional stargazing.

(Second Saturdays)
DOWNTOWN ARTS ASSOCIATION
Downtown St. Petersburg
Gallery Walks
2955 Central Avenue
St. Petersburg, FL 33713
www.stpetearts.org
727.323.2787
This monthly, evening gallery walk includes more than 20 participating galleries.

www.pinellasarts.org

To locate the growing Public Art collection in Pinellas County, visit these websites:

www.pinellasarts.org/permanent-collection.htm
www.stpete.org/publicart.htm





NORTHERN PINELLAS

ART | SCIENCE | HISTORY | GARDENS

- TARPON SPRINGS CULTURAL CENTER**
101 S. Pinellas Avenue
Tarpon Springs, FL 34689
www.tarponsarts.org
727.842.5605
The Cultural Center houses three art galleries and has an 90-seat theater that features plays, concerts and films.
- TARPON SPRINGS TRAIN DEPOT MUSEUM**
160 E. Tarpon Avenue
Tarpon Springs, FL 34689
www.tarponsarts.org
727.843.4624
The Depot Museum is a restored railroad depot which houses local history and transportation, exhibits, and performances.
- TARPON SPRINGS HERITAGE MUSEUM**
100 Brookman Lane
Tarpon Springs, FL 34689
www.tarponsarts.org
727.837.0686
The Heritage Museum explores the environment, history and culture that created Tarpon Springs through photographs, exhibits and film, chamber music performances, and the Christopher Still murals.
- BROOKER CREEK PRESERVE**
3940 Keystone Road.
Tarpon Springs, FL 34688
www.pinellascounty.org/environment
727.453.6800
On 8,500 acres, the Brooker Creek Preserve Environment Education Center is Pinellas' largest natural area. There are guided walking tours and a wide variety of programs from art to wildlife, music, and science.

- HERITAGE VILLAGE**
11909 125th Street N
Largo, FL 33774
www.pinellascounty.org/heritage
727.582.2123
Heritage Village is a 21-acre outdoor, living history museum with 28 historic buildings and provides tours, classes, and festivals about Florida music and crafts.
- ARMED FORCES MILITARY MUSEUM**
2650-34th Way N
Largo, FL 33771
www.armedforcesmuseum.com
727.539.8371
This 35,000 sq. ft. museum houses one of the largest collections of military memorabilia in Florida. Open daily, the museum simulates military history for all ages.
- GULF BEACH ART CENTER**
1515 130th St., Suite #100
Indian Rocks Beach, FL 33785
www.beachartcenter.org
727.596.4331
Gulf Beach Art Center has adult classes, a children's summer program and exhibitions in various media of the visual arts.
- PANAMA CANAL MUSEUM**
7895 130th St., Suite #100
Seminole, FL 33772-4112
www.panamacanal.com
727.394.9338
The mission of the museum is to preserve the history of the American era of the Panama Canal (1904-1999).

- TARPON SPRINGS PERFORMING ARTS CENTER**
600 Westman Road
Tarpon Springs, FL 34689
www.spcollage.edu/museum
727.712.5762
Located on the Tarpon Springs Campus of St. Petersburg College, the Museum hosts 2 changing exhibit galleries, 8 permanent exhibition galleries, an interactive gallery and a museum store.
- LEEPA-RATNER MUSEUM OF ART**
600 Westman Road
Tarpon Springs, FL 34689
www.leepa-art.com
727.712.5762
The museum has several exhibition galleries and a cafe in addition to providing visual art instruction for adults and children including a hands-on children's art museum.

- DUNEDIN FINE ART CENTER**
1143 Michigan Blvd.
Dunedin, FL 34688
www.dfac.org
727.298.3322
The center has several exhibition galleries and a cafe in addition to providing visual art instruction for adults and children including a hands-on children's art museum.
- DUNEDIN HISTORICAL SOCIETY**
349 Main Street
Dunedin, FL 34688
www.dunedinmuseum.org
727.581.1176
Dunedin Historical Society promotes research and preservation of the history of the city of Dunedin.

- SAFETY HARBOR MUSEUM OF REGIONAL HISTORY**
329 Bayshore Blvd. S
Safety Harbor, FL 34695
www.safetyharbor-museum.org
727.726.1868
Safety Harbor Museum promotes historical values and heritage of the area and also has educational exhibits and guided tours for schools and groups.
- CLEARWATER MARINE AQUARIUM**
249 Windward Passage
Clearwater, FL 33767
www.cmqaquarium.org
727.441.1790
The Aquarium is dedicated to the rescue, rehabilitation and release of marine animals and the environmental education of the public.

- FLORIDA BOTANICAL GARDENS**
12520 Ulmerton Road
Largo, FL 33774
www.fbg.org
727.582.2200
The gardens are 150 acres of stunning natural areas, walks and trails, open daily, free. Adjacent to Heritage Village, and the Pinellas County Extension.
- WEST COAST PLAYERS**
21595 US 19 N & Drew St.
Clearwater, FL 33765
www.westcoastplayers.org
727.734.1100
The players produce 4 plays, yearly, at their new theater in Clearwater.

- FRANCIS WILSON PLAYHOUSE**
302 Seminole Street
Clearwater, FL 33755
www.franciswilsonplayhouse.org
727.446.1360
Francis Wilson Playhouse annually produces eight main-stage plays including musicals, comedies and dramas.
- LARGO CULTURAL CENTER**
105 Central Park Drive
Largo, FL 33771
www.largosarts.org
727.581.6793
Largo Cultural Center has a "state of the art" professional theater, along with rental space for various meetings and entertainment programs of national touring acts, musicals, drama, dance, schools and family theater.
- RUTH ECKERT HALL**
1111 N. McMiller Booth Road
Clearwater, FL 33759
www.rutheckerthall.com
727.791.7400
Ruth Eckert Hall offers performances by national and international touring companies in theater, music and dance. There is a new facility devoted to educational development of both children and adults.
- CAPITOL THEATRE**
405 Cleveland Street
Clearwater, FL 33755
727.441.8968
727.791.7400 (tickets)
Ruth Eckert Hall and the City of Clearwater manage this renovated, 500-seat, historical opera house which features an array of contemporary musicians and performers.



SOUTHERN PINELLAS

ART | SCIENCE | HISTORY | GARDENS

- THE MOREAN ARTS CENTER**
719 Central Avenue
St. Petersburg, FL 33701
www.moreansartscenter.org
727.822.7872
The Arts Center features gallery exhibitions and offers year-round classes in all media of visual art for children and adults.
- SUNTAN ART CENTER at DON VISTA**
3390 Gulf Boulevard
St. Pete Beach, FL 33706
www.suntanart.org
727.267.9818
The Center is a teaching gallery with classes, workshops and demonstrations, artist exhibitions and competitions.
- THE CHIMILY COLLECTION**
*Opening July 2010
400 Beach Drive
St. Petersburg, FL 33701
727.822.7872
Managed as a satellite space by the Morean Arts Center, the collection features blown glassworks by master artist Dale Chimily.
- FLORIDA CRAFTSMEN GALLERY**
501 Central Avenue
St. Petersburg, FL 33701
www.floridacraftsmen.net
727.821.7391
Florida Craftsmen Gallery is a showcase for contemporary craft artists from throughout the state.
- FLORIDA HOLOCAUST MUSEUM**
55 5th Street S
St. Petersburg, FL 33702
www.fhlocaustmuseum.org
727.820.0100
The museum houses a permanent collection of photographs, testimonials and historical artifacts plus changing exhibits of art and photography, all relating to various aspects of the Holocaust.
- FLORIDA INTERNATIONAL MUSEUM**
244 2nd Avenue N
St. Petersburg, FL 33701
www.floridainternationalmuseum.org
727.341.7900
This Smithsonian affiliate schedules periodic cultural exhibitions from around the world.
- MUSEUM OF FINE ARTS**
256 Beach Drive NE
St. Petersburg, FL 33701
www.fine-arts.org
727.886.2667
The Museum has the most extensive art collection on Florida's west coast. The new Hazel Hough wing, gift shop and restaurant add to the Museum's scope and ambiance.
- ST. PETERSBURG MUSEUM OF HISTORY**
335 2nd Avenue NE
St. Petersburg, FL 33701
www.spmoh.org
727.884.1052
St. Petersburg Museum of History focuses on the history of St. Petersburg, the Pinellas Peninsula and Florida.
- PIER AQUARIUM**
800 2nd Avenue NE
St. Petersburg, FL 33701
www.pieraquarium.org
727.895.7437
Pier Aquarium is a live fish exhibition and marine science education facility. It has a trio of cylindrical tanks that rise from the first floor lobby, an aquarium on the second floor and daily fish feedings at 3pm.
- THE SALVADOR DALI MUSEUM**
1000 3rd Street S
St. Petersburg, FL 33701-4925
www.thedali.org
727.823.3767
The largest and most comprehensive collection of Dali's work in America. Rotating exhibitions, daily tours, Family Fun Saturdays and much more. The new Dali Museum will be opening in January, 2011.
- WOODSON AFRICAN-AMERICAN MUSEUM**
2240 - 9th Avenue S
St. Petersburg, FL 33712
www.woodsonmuseum.org
727.323.1104
The Dr. Carter L. Woodson African-American Museum represents and preserves the history of African-Americans in Pinellas County and St. Petersburg.
- SUNKEN GARDENS**
1825 4th Street N
St. Petersburg, FL 33704
www.stpete.org
727.851.3100
Sunken Gardens, located on six acres, is a horticultural treasure and has been designated as an historic landmark.
- GREAT EXPLORATIONS, THE CHILDREN'S MUSEUM**
1925 4th Street N
St. Petersburg, FL 33704
www.greatexplorations.org
727.821.8992
The children's hands-on museum is where you don't look at the exhibits, you touch, move, explore and become part of them.
- GULF BEACHES HISTORICAL MUSEUM**
115 10th Avenue
St. Pete Beach, FL 33706-4202
www.stpetebeach.org
727.582.1810
The museum, housed on the barrier islands, has exhibits depicting the history of the county's beach areas. Call for regular visiting hours.
- SCIENCE CENTER OF PINELLAS COUNTY**
7701 22nd Avenue N
St. Petersburg, FL 33710-3699
www.sciencecenterofpinellas.com
727.384.0027
The hands-on facility is a learning center with laboratories, wetlands, terraced gardens, planetarium and science exhibits.
- PINELLAS PARK ART SOCIETY**
5851A Park Blvd.
Pinellas Park, FL 33781
727.541.2957
Pinellas Park Art Society offers classes and exhibitions for members.
- WEDDON ISLAND PRESERVE**
1800 Weddon Drive, NE
St. Petersburg, FL 33702
www.pinellascounty.org/environment
727.453.6600
This nature education area has exhibits, programs and hikes dedicated to the marine coastal environment and the adaptations of ancient and historic people to the land. In the Preserve are elevated boardwalks with an observation tower, a fishing pier, and hiking trails.
- AMERICAN STAGE**
163 Third Street N
St. Petersburg, FL 33701
www.americanstage.org
727.821.1000
American Stage, Tampa Bay's oldest nonprofit professional theater, produces live contemporary and classical plays as well as programs in schools and communities.
- PROGRESS ENERGY CENTER MAHAFFEY THEATER**
400 1st Street S
St. Petersburg, FL 33701
www.mahaFFEYtheater.org
727.892.5167
MahaFFEY Theater is a major venue for national and international performing arts presentations and provides programs for arts education.
- PINELLAS PARK PERFORMING ARTS CENTER**
4951 78th Avenue N
Pinellas Park, FL 33781
www.pinellas-park.com
727.518.4576
This new center will feature performing arts and art exhibitions.
- STUDIO@620, THE THEATRE**
600 1st Avenue S
St. Petersburg, FL 33701
www.thestudio620.com
727.895.6620
The Studio focuses on multi-cultural arts, crafts, music, poetry, theater, film, dance and dialogue.
- PALLADIUM THEATER**
253 5th Avenue N
St. Petersburg, FL 33701
www.mypalladium.com
727.822.5900
With 845 seats, the Palladium is the perfect size for chamber music, jazz, opera, dance and a host of other community events.
- ST. PETERSBURG OPERA CO., INC.**
at the Palladium Theater
253 5th Avenue N
St. Petersburg, FL 33701
www.stpeteopera.org
727.823.2040
St. Petersburg Opera Company presents fully staged professional opera with live orchestra.
- ST. PETERSBURG LITTLE THEATRE**
4025 5th Street S
St. Petersburg, FL 33712-4047
www.spilt.org
727.896.1973
St. Petersburg Little Theatre is the oldest, continuously operating community theatre in the State of Florida.
- CATHERINE A. HICKMAN THEATER OF GULFPORT**
5501 27th Avenue S
Gulfport, FL 33707
www.gulfportfl.us
727.893.1070
The Catherine Hickman Theater is a state-of-the-art performing arts theater with excellent acoustics and 180 comfortable seats.

You can download a copy of this map at:
<http://www.pinellasarts.org/pdf/culturalmap.pdf>